



DENVER
THE MILE HIGH CITY

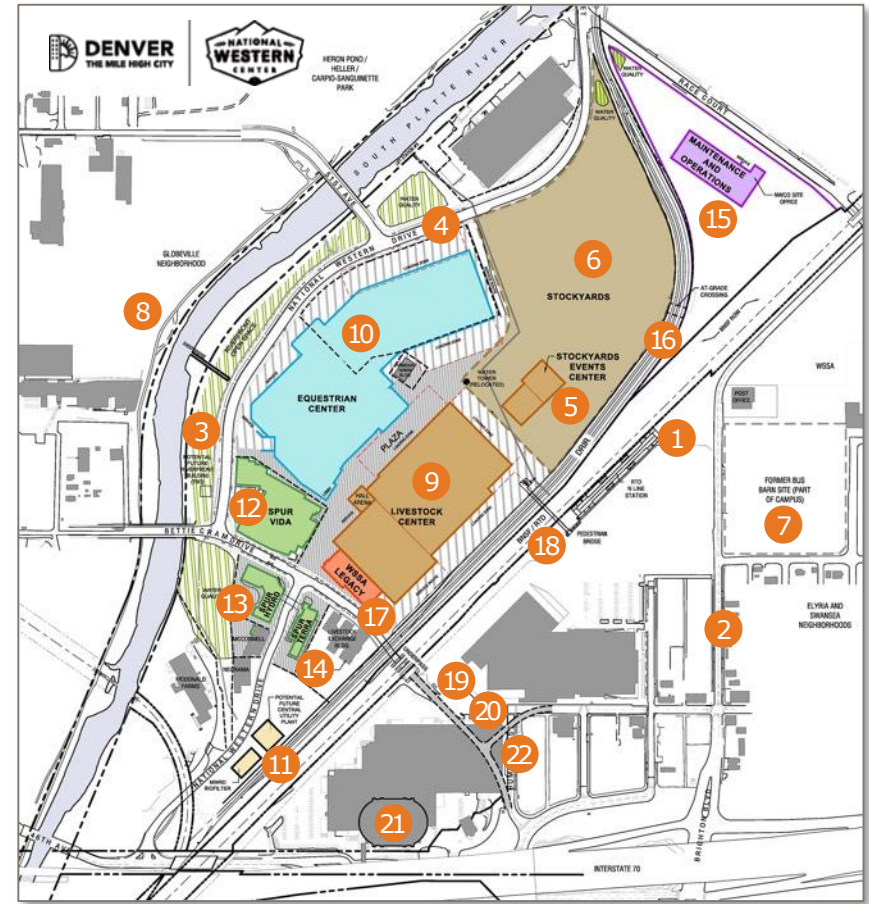


CITIZENS ADVISORY COMMITTEE CONSTRUCTION UPDATE

October 28, 2021

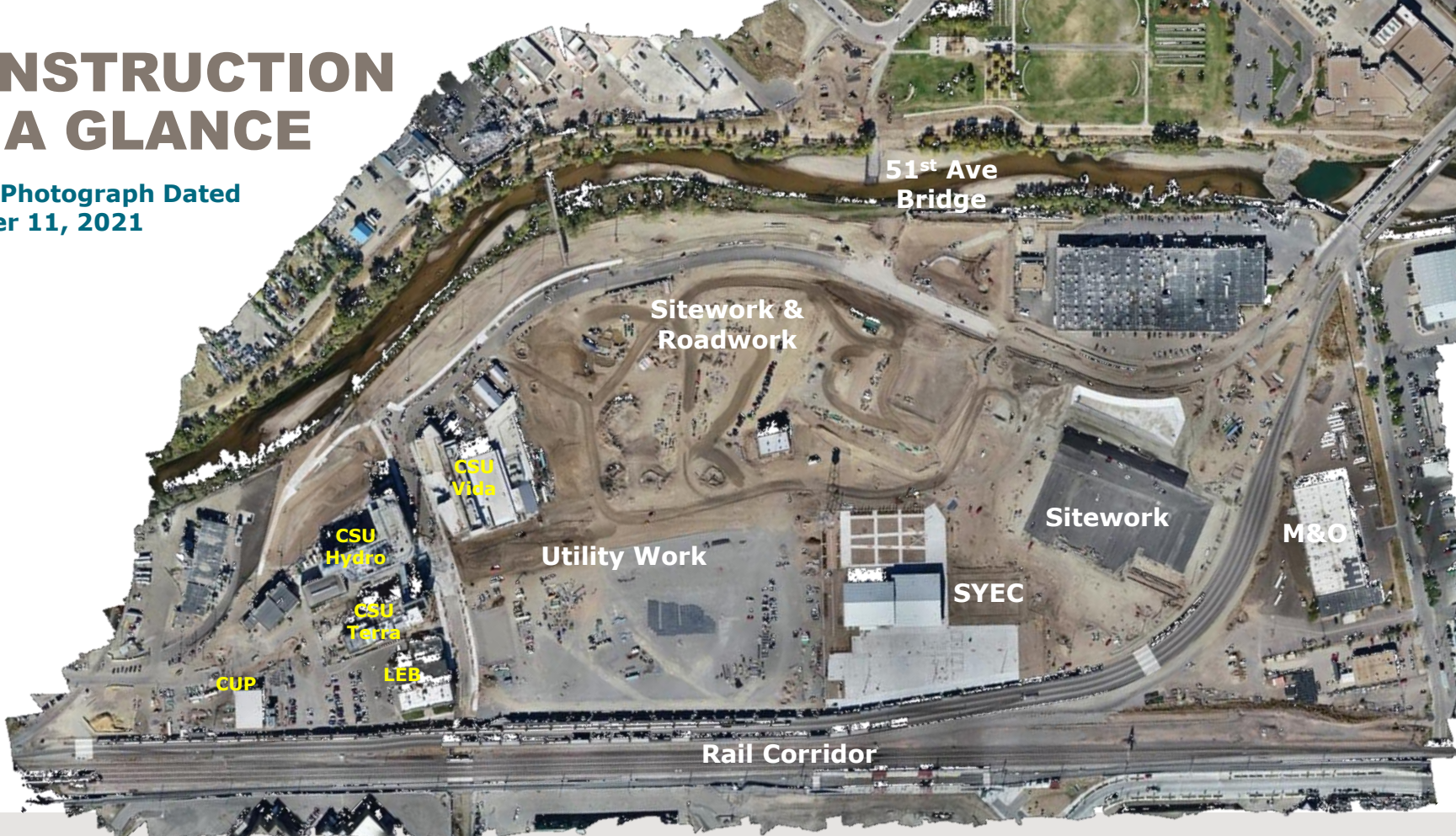
NWC CAMPUS PLAN

1. RTD Transit Station
2. Brighton Blvd. – 47th to Race Court
3. South Platte Riverfront
4. New National Western Drive
5. Stockyards Events Center
6. The Yards Multi-Use Space
7. Campus-related transit-oriented development (TOD)
8. New Bridges Near 48th & 51st Avenues
9. Livestock Center
10. Equestrian Center
11. District energy system's central utility plant (CUP)
12. CSU System Spur: Vida (health)
13. CSU System Spur: Hydro (water)
14. CSU System Spur: Terra (food)
15. Maintenance & Operations Facility
16. DRIR Rail Corridor
17. WSSA Legacy Building HQ
18. Pedestrian Bridge
19. Arena
20. Expo Hall
21. 1909 Rehabilitation
22. Supporting Development



CONSTRUCTION AT A GLANCE

Aerial Photograph Dated
October 11, 2021



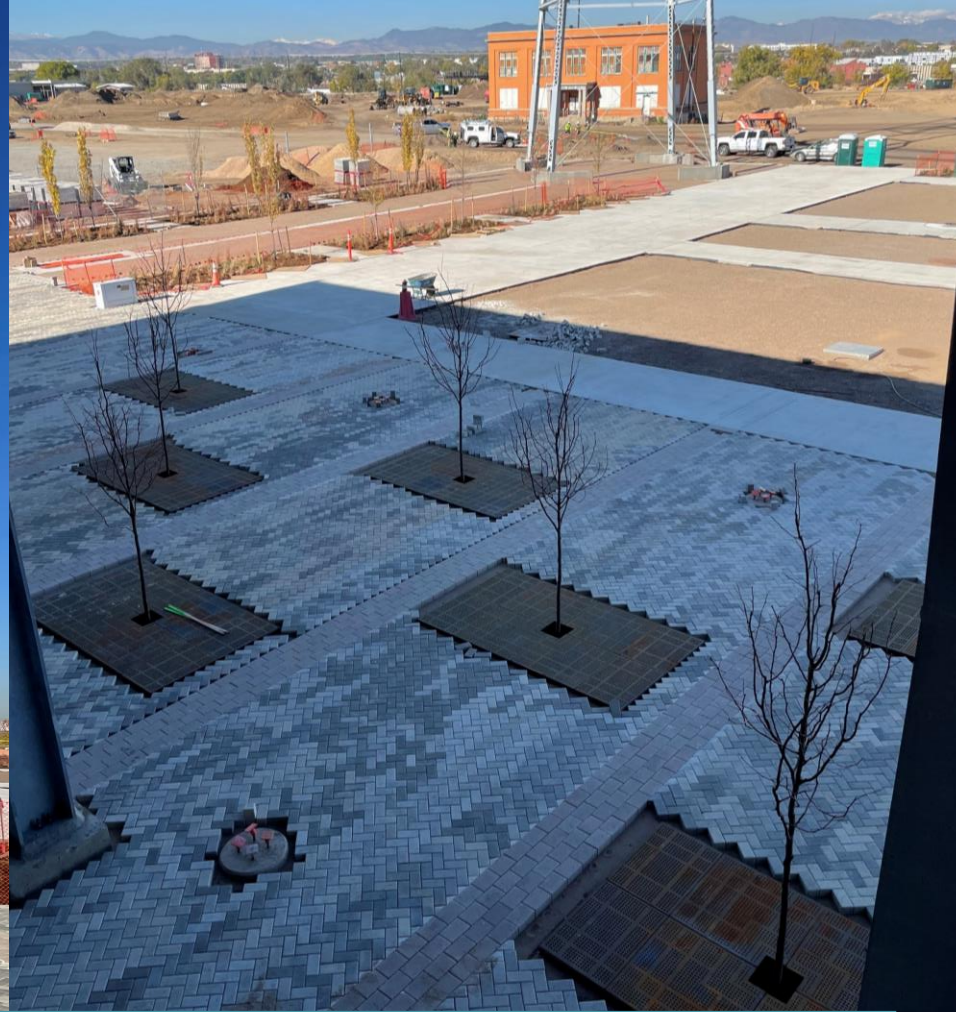
- 
1. West Plaza
 2. Stockyards / Multi-Use Space
 3. East Plaza

The City and County of Denver continues construction progress on the future National Western Center site with the near completion of the Stockyards Event Center.

Aerial Dated: 10.18.21



Preparations are also in full swing for the 2022 Stock Show with the installation of 484 metal posts that will create the future, permanent bison pens on the East side of the building.



Crews are also making significant progress on paver installation on the West side of the building for what will be a future multi-use space and West Plaza.



- 1. West Plaza
- 2. Stockyards/ multi-use space
- 3. East Plaza / Bison Pens

Aerial Dated: 9.21.21



Aerial Dated: 10.18.21



- 1. Sheep Bridge
- 2. National Western Drive
- 3. Shared Use Path



National Western Drive roadwork continues. Curb, gutter, paving and the shared use path are progressing significantly along the riverfront.

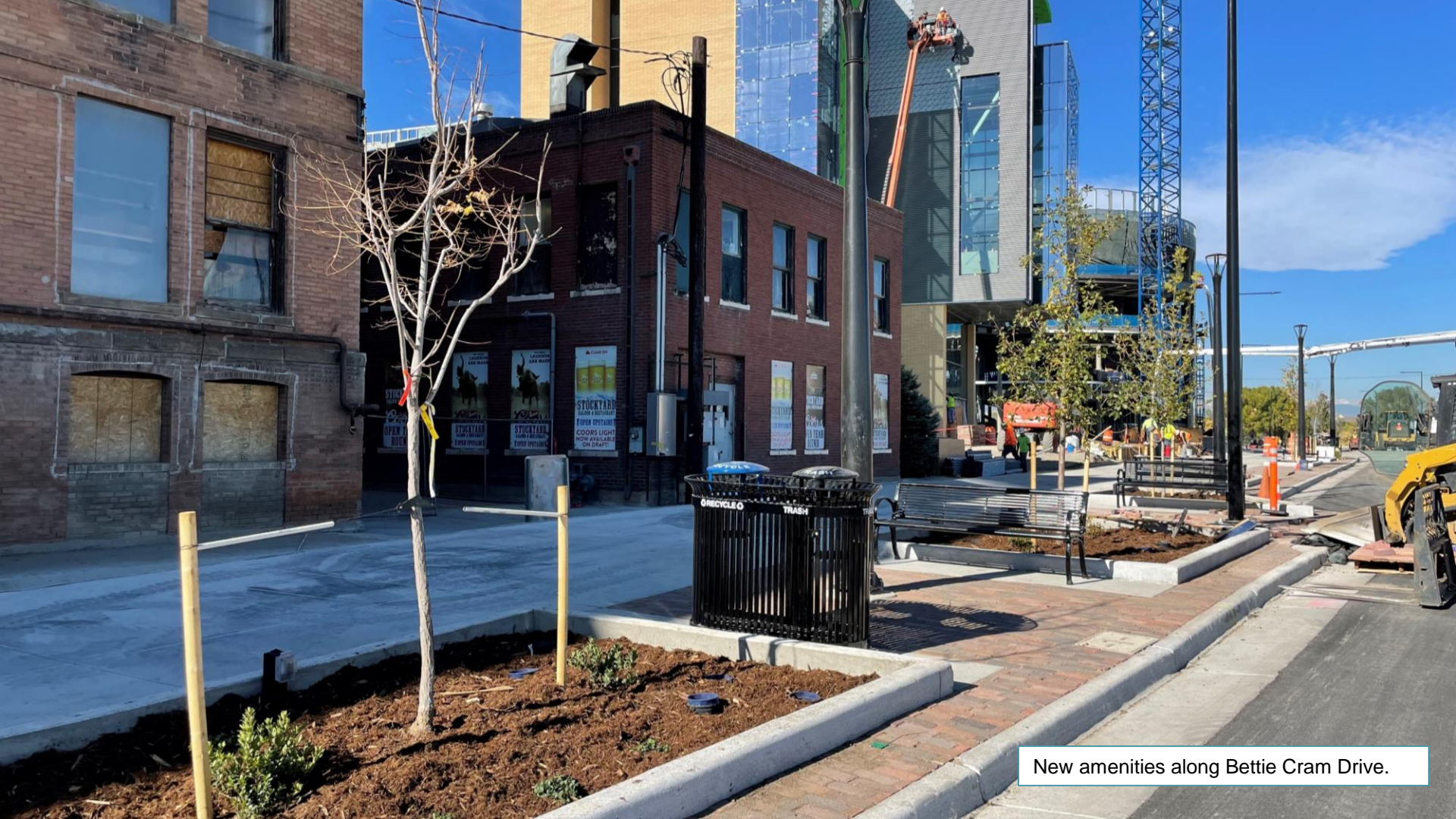


- 1. Central Utility Plant (CUP)
- 2. Livestock Exchange Building
- 3. Temporary Sedimentation Pond
- 4. Bettie Cram Drive
- 5. CSU Spur

 **DENVER**
THE MILE HIGH CITY

 **NATIONAL
WESTERN
CENTER**

The construction team is tracking toward completion on Bettie Cram Drive with planters, trees and benches already installed.



New amenities along Bettie Cram Drive.



THANK YOU!

